



### Caban Coch Dam, Wales



#### PROJECT SUMMARY

PROJECT NAME: Dam Piezometer Rehabilitation

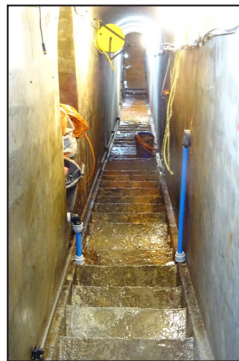
PROJECT DATE: 2018

CLIENT: DWR CYMRU Welsh Water

CONTRACTOR : Tema Engineering

CONSULTANT: Geosense

INSTRUMENTATION SPECIALIST: Geosense



#### OVERVIEW

Six dams were constructed along the Elan Valley in the 19th century by the Birmingham Corporation Water Department to provide clean drinking water for Birmingham in the West Midlands of England

As part of DWR Cymru Welsh Water's upgrading of monitoring systems within the Elan Valley Six Dams, the original pneumatic piezometers installed in 1980 were replaced by Vibrating Wire Piezometers together with automatic Linx data loggers.

#### MONITORING

To monitor pore pressures within the base of the dam, the vibrating wire piezometers were connected to individual single channel Linx data loggers which automatically record data from each piezometer.

The data can be downloaded via USB using the Linx software and sampling intervals can also be changed if required.

#### PRODUCTS USED

##### VW Piezometer

Vibrating Wire sensor for accurate measurement of pore water pressure.

##### Single Channel Linx Logger

Battery powered data logger for stand-alone automatic data acquisition.